

CREATE WITH CAMERATA: STAFFORDSHIRE, STOKE AND TELFORD SCHOOLS

TUESDAY 3rd MARCH, 11AM, STAFFORDSHIRE COUNTY SHOWGROUND

Welcome to the culmination of the **Create with Camerata Project**, presented by **Manchester Camerata** and **The Music Partnership!**

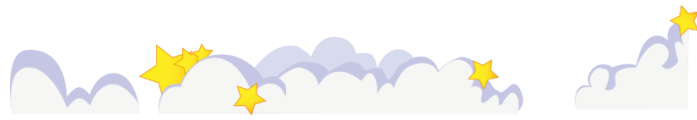
The schools performing today have worked alongside musicians from Manchester Camerata to compose original songs inspired by Disney's *Fantasia*, celebrating its 80th anniversary. The classic film blends animated imagery with classical music, which we wanted to incorporate here: so, look up and enjoy animations based on the pupils' drawings inspired by the film and its music!

1. **Section 1:** opening – composed by teachers, all schools
2. **Section 2:** based on *Tocatta and Fugue in D Minor* by Bach – Our Lady & St Werburgh's (Newcastle, ST5 4AG)
3. **Section 3:** based on *The Nutcracker Suite* by Tchaikovsky – Endon Hall (Stoke-on-Trent, ST9 9HH)
4. **Section 4:** based on *The Nutcracker Suite* by Tchaikovsky – St Michael's First School Penkridge (Stafford, ST19 5DJ)
5. **Section 5:** based on *The Sorcerer's Apprentice* by Dukas – Woodseaves Primary (Stafford, ST20 0LB)
6. **Section 6:** based on *The Rite of Spring* by Stravinsky – St Nathaniel's (Stoke-on-Trent, ST6 4JG)
7. **Section 7:** based on *The Rite of Spring* by Stravinsky – Burton Manor (Stafford, ST17 9PS)
8. **Section 8:** intermission – composed by teachers, all schools
9. **Section 9:** based on *Pastoral Symphony* by Beethoven – St Austin's (Stafford, ST17 4BT)
10. **Section 10:** based on *Pastoral Symphony* by Beethoven – Fulfen Primary (Burntwood, WS7 9BJ)
11. **Section 11:** based on *The Dance of the Hours* by Ponchielli – St Mary's C of E (Rugeley, WS15 3LN)
12. **Section 12:** based on *Night on a Bald Mountain* by Mussorgsky – Coalbrookdale and Ironbridge C of E (Telford, TF8 7DS)
13. **Section 13:** based on *Ave Maria* by Schubert – St Patrick's (Stafford, ST16 3BT)



Richard Taylor Composer
Matthew Malone Pianist and Musical Director
Sarah Whittingham Violin
Jenny Cox French Horn
Tim Chatterton Tenor Trombone
Amina Hussain Flute





CREATE WITH CAMERATA: STAFFORDSHIRE, STOKE AND TELFORD SCHOOLS

TUESDAY 3rd MARCH, 2PM, STAFFORDSHIRE COUNTY SHOWGROUND

Welcome to the culmination of the **Create with Camerata Project**, presented by **Manchester Camerata** and **The Music Partnership!**

The schools performing today have worked alongside musicians from Manchester Camerata to compose original songs inspired by Disney's *Fantasia*, celebrating its 80th anniversary. The classic film blends animated imagery with classical music, which we wanted to incorporate here: so, look up and enjoy animations based on the pupils' drawings inspired by the film and its music!

1. Section 1: opening – composed by teachers, all schools
2. Section 2: based on *Toccata and Fugue in D Minor* by Bach – Willows Primary (Stoke-on-Trent, ST4 7JY)
3. Section 3: based on *The Nutcracker Suite* by Tchaikovsky – Oakridge Primary (Stafford, ST17 0PR)
4. Section 4: based on *The Nutcracker Suite* by Tchaikovsky – St Anne's Weeping Cross (Stafford, ST17 0EA)
5. Section 5: based on *The Sorcerer's Apprentice* by Dukas – St Joseph's Catholic (Stoke-on-Trent, ST6 5RN)
6. Section 6: based on *The Rite of Spring* by Stravinsky – St Dominic's Catholic (Stone, ST15 8YG)
7. Section 7: based on *The Rite of Spring* by Stravinsky – St Mary's Catholic (Stoke-on-Trent, ST5 2SU)
8. Section 8: intermission – composed by teachers, all schools
9. Section 9: based on *Pastoral Symphony* by Beethoven – Scotch Orchard Primary (Lichfield, WS13 6DE)
10. Section 10: based on *Pastoral Symphony* by Beethoven – Springhead Primary (Stoke-on-Trent, ST7 1RA)
11. Section 11: based on *The Dance of the Hours* by Ponchielli – Grange Park (Telford, TF3 1FA)
12. Section 12: based on *Night on a Bald Mountain* by Mussorgsky – Sutherland Academy (Stoke-on-Trent, ST3 3DY)
13. Section 13: based on *Ave Maria* by Schubert – Five Ways Primary (Cannock, WS12 2EZ)



Richard Taylor Composer
Matthew Malone Pianist and Musical Director
Sarah Whittingham Violin
Jenny Cox French Horn
Tim Chatterton Tenor Trombone
Amina Hussain Flute

